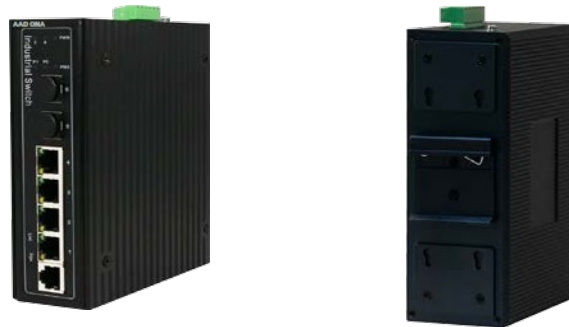


4GE+2SFP 10/100/1000Mbps managed industrial Switch

Sapphire SML-4GE2S



Model	SML-4GE2S
Ports	4*10/100/1000Base-TX RJ45 2*1000M SFP
Console	1*console Port for management
Reset	1
Power input	2*independent power input DC 12-57V
Environment detection	1 set of environmental temperature and humidity detection input
Feature function	1: industrial switch monitoring platform One-key set up a ring network 2: 2 group independent power inputs with undervoltage and overvoltage protection 3:1 group wide pressure alarm input, input range DC5-57V 4:1 group alarm output relay output, can define various custom conditions trigger 5:1 group environment temperature and humidity detection, real-time monitoring of environmental conditions 6: Real-time system key voltage monitoring and alarm output function 7: real-time system temperature, ambient temperature, environment humidity alarm output function 8: Real-time input voltage, current, power detection and display 9: A variety of custom port control, intelligent management
Network protocol	IEEE 802.3x IEEE 802.3 IEEE 802.3u IEEE 802.3ab IEEE 802.3z IEEE 802.3ad IEEE 802.3q IEEE 802.3q/p IEEE 802.1w IEEE 802.1d IEEE 802.1S IEEE 802.3z 1000BASE-X STP(Spanning Tree Protocol) RSTP/MSTP(Rapid Spanning Tree Protocol) EPPS ring network protocol EAPS ring network protocol
Network port	1-4 port 10/100/1000BaseT (X) adaptive Full/half duplex MDI/ MDI-X adaptive

Forward mode	Store-and-forward (full-line speed)
Backplane bandwidth	12 Gbps Non-blocking
Packet forwarding rate	8.92 Mpps
MAC table	8K
Packet forwarding cache	4.1M
Medium	10BASE-T : Cat3,4,5 UTP(≤250 meter) 100BASE-TX : Cat5 or later UTP(≤100 meter) 1000BASE-TX : Cat6 or later UTP(≤1000 meter) 1000BASE-SX:62.5μm/50μm MMF(2m~550m) 1000BASE-LX:62.5μm/50μm MM(2m~550m) or 10μm SMF(2m~5000m)
FLASH	16M
RAM	128M
Power consumption	≤15W
LED indicator	5/6: (SFP indicator) Port (green/100M+yellow/1000M) PWR: (power indicator) PMX: (Power overload indicator light)
Operating temperature/ humidity	-40~+85°C; 5%~90% RH No condensation
Storage temperature/ humidity	-55~+95°C; 5%~95% RH No condensation
Product size/package size (L*W*H)	160*115*40mm 310*210*60mm
Net/gross weight (kg)	0.9/1.1kg
installation	Rail mounting
Lightning protection/protection level	Port lightning protection : 6KV 8/20us; Protection grade : IP40
Safety certification	CE mark, commercial; CE/LVD EN60950; RoHS
Quality assurance period	2 year

WEB software function	
standards	IEEE 802.3x IEEE 802.3- IEEE 802.3u- IEEE 802.3ab- IEEE 802.3z IEEE 802.3ad IEEE 802.3q 、 IEEE 802.3q/p IEEE 802.1w- IEEE 802.1d 、 IEEE 802.1S IEEE 802.3z 1000BASE-X STP(Spanning Tree Protocol) RSTP/MSTP(Rapid Spanning Tree Protocol) EPPS ring network protocol

MAC Address	8K MAC addresses ; MAC address learning and aging
VLAN	4k VLANs; Port-based VLANs; 802.1Q VLAN
Spanning Tree	STP(Spanning Tree Protocol) RSTP/MSTP(Rapid Spanning Tree Protocol) PPS ring network protocol EAPS ring network protocol 802.1x argumentation agreement
Link Aggregation	Max 8 aggregation groups, each supports 8 ports Static aggregation and dynamic aggregation
Port Mirror	Many-to-one port mirroring
Loop Guard	Loop protection function, real-time detection, rapid alarm, accurate positioning, intelligent blocking, automatic recovery
isolation	Support downlink ports isolated from each other and communicate with upstream port
Port flow control	Half duplex based back pressure control Full duplex based on PAUSE frames
line rate	Support port based input / output bandwidth management
IGMP Snooping	IGMPv1/2/3 MLDv1/2 Snooping GMRP protocol registration Multicast address management, multicast VLAN, multicast routing ports, static multicast addresses
DHCP	DHCP Snoping
Storm suppression	Unknown unicast, multicast, unknown multicast, storm suppression of broadcast type Storm suppression based on bandwidth tuning and storm filtering
Security	User port+IP address+MAC ACL based on IP and MAC Security properties of port based MAC address quantities
QOS	802.1p port queue priority algorithm Cos/Tos, QOS sign WRR (Weighted Round Robin), Weighted priority rotation algorithm WRR, SP, WFQ, 3 priority scheduling models
Port	Auto-MDIX ; Auto negotiation
system maintenance	Upgrade package upload; system log view WEB restore factory configuration
Industrial switch monitoring platform	RING ON/OFF , RING status , Alarm input/Output , environment temperature and humidity detection, real-time monitoring of environmental conditions
Management and maintenance	WEB Remote configuration and maintenance using Telnet SNMP V1/V2/V3; SSHV1/V2 RMON